

# KAMMAFRANS GUESTHOUSE

2025



# WELCOME TO KAMMAFRANS GUESTHOUSE

Welcome to KammaFrans Guesthouse  
Sensitively restored and decorated to retain much of its character, KammaFrans guesthouse suites sleeps up to 40 guests in 16 units, all featuring original stone and brick walls.

Set in a peaceful location, yet a stone's throw away from the Bronberg Mountain range, we are a guesthouse accommodation provider in Pretoria East along Lynnwood Road extension (Graham Rd).

KammaFrans is situated central to Shere, Hazeldean, Silver Lakes, Tiger Valley, Boschkop, Mooiplaats and Zwavelpoort hosting popular venues, conferences, office parks, equestrian related holdings and hospitals all in close proximity.

KammaFrans rooms each have private entrances where you can enjoy peace and privacy after a tiring trip or day at the office. All rooms are fitted with fans, heaters, WiFi and tea & coffee facilities.

Our guesthouse is situated in natural country gardens amongst majestic century old trees. Our accommodation itself has old world rustic charm and every room has its own individual character. Our gardens have several private spots where you can relax close with nature.



## LA TAPISSERIE (ROOM 2)

PRICE **R1150**

A cozy double bed, a comfortable reading chair, and a dedicated workstation provide the perfect blend of relaxation and productivity. The suite features a well-appointed bath with a double basin, and you'll also have access to a charming communal courtyard for unwinding.



## FRENCH QUARTERS (ROOM 3)

Choose between twin beds or a luxurious king-size bed, complemented by a cozy reading chair and a convenient workstation. Private bathroom with a shower. Access to a charming communal courtyard for unwinding, enhancing your stay with a touch of scenic beauty.

PRICE **R1150**



## FRENCH QUARTERS (ROOM 3B)

Featuring a double bed, a plush reading chair, and a well-equipped workstation, this room provides both comfort and practicality. Refresh yourself in the modern shower and take advantage of the charming communal courtyard, ideal for relaxing or mingling.

PRICE **R1150**



## VIGNETTE (ROOM 4)

This room features a double bed and an extra daybed to accommodate a third guest (R250.00 additional charge), complemented by a comfortable workstation. Refresh in the modern shower and relish exclusive access to a delightful courtyard, elegantly furnished with classic French pieces.

PRICE **R1150**



## OPPIEPAD (ROOM 5)

This room includes a double bed, a well-appointed workstation, and a modern shower. It also offers exclusive access to a private garden, elegantly furnished with charming French outdoor furniture.

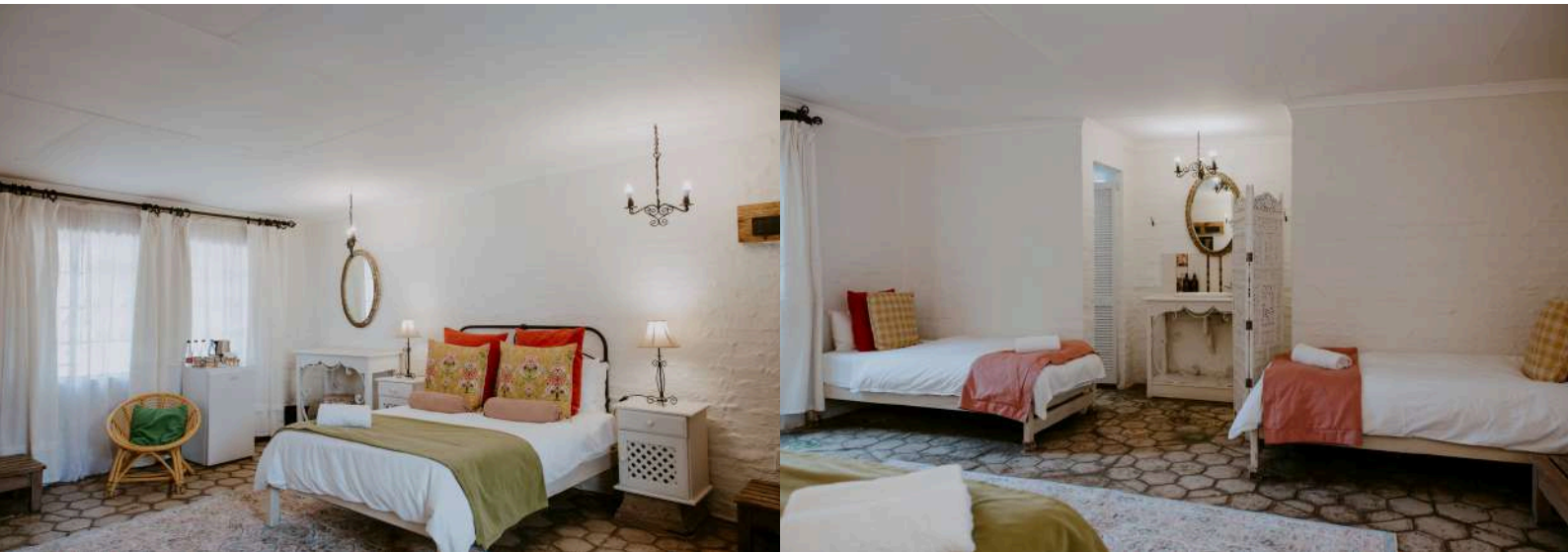
PRICE **R1150**



## AMOUR DE FAMILLE (ROOM 6)

This family room features a private entrance that leads to a tranquil courtyard garden, elegantly furnished with French garden furniture. Inside, you'll find a comfortable Queen-size bed and two single beds, along with a separate toilet and shower for added convenience.

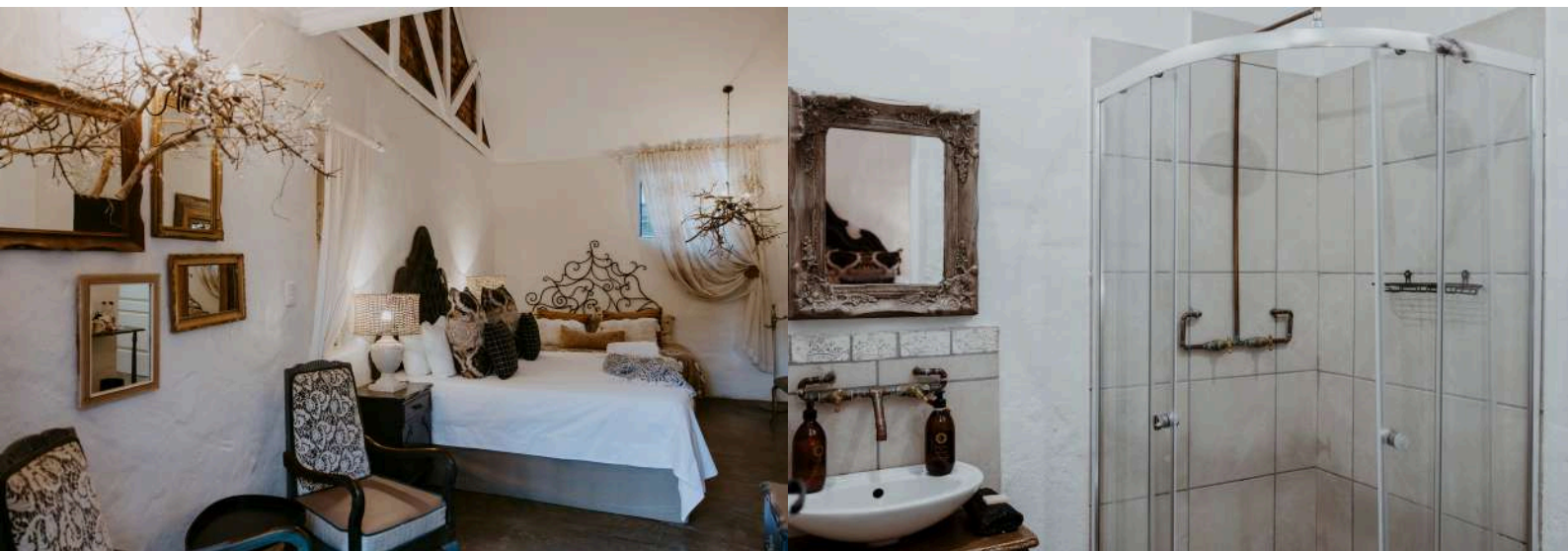
PRICE **R1490**



## AMOUREUX (ROOM 7)

The room boasts an exterior stable door that opens onto a stunning garden, complete with towering century-old trees and elegant French garden furniture. Inside, the spacious and romantic setting features a luxurious king-size bed and a cozy reading chair. A separate, private shower adds to the comfort and convenience of your stay.

PRICE **R1490**



## DE DEUX (ROOM 8)

This suite features an exterior door that leads to a picturesque garden, adorned with majestic century-old trees and charming French garden furniture. The suite comprises two distinct rooms: a spacious room with a double bed and another with a single bed, plus a cozy daybed in a dedicated space. It also includes a private shower room for added convenience.

PRICE **R1850**



## L'ARBRE (ROOM 9)

This room features an exterior door that opens to a stunning garden, complete with towering century-old trees and elegant French garden furniture. Inside, you'll find a spacious layout with a luxurious double bed, and a daybed for an additional guest (R250.00 extra), a convenient workstation, and a separate private shower.

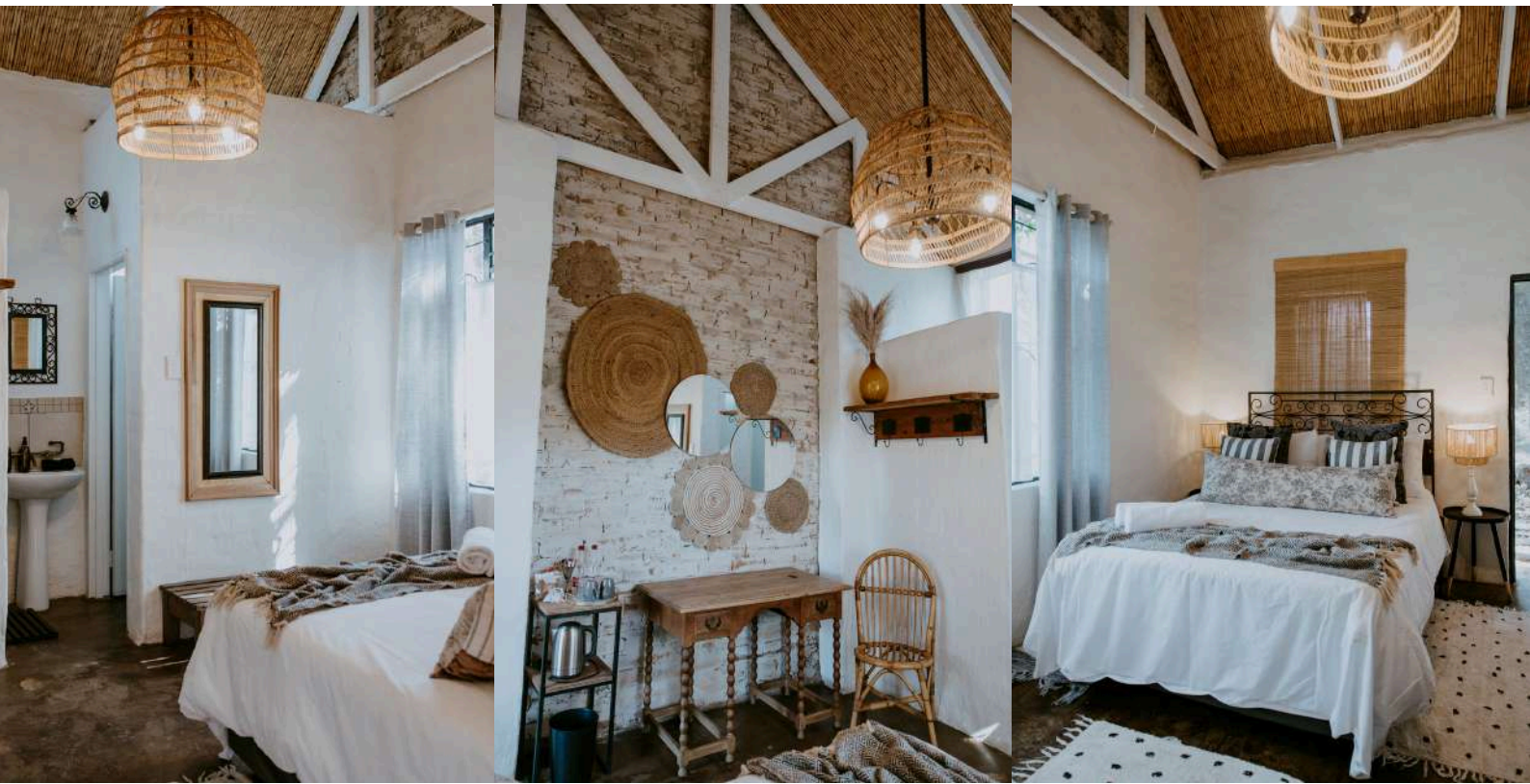
PRICE **R1150**



## BELLE VUE (ROOM 10)

This room boasts an exterior door leading to a private patio, where you'll find a charming French garden bench. Inside, it features a double bed, a workstation, a comfortable reading chair, and a private shower for your convenience.

PRICE **R1150**



## LE COUP DE FOUDRE – LOVE AT FIRST SIGHT (ROOM 11)

Our Main Honeymoon Suite is an expansive and enchanting retreat, featuring a beautifully restored Victorian clawfoot bath set beneath a glass roof—allowing you to bathe under the stars! The suite boasts a generous living area with a charming couch and ottoman positioned in front of an antique fireplace. For added romance and privacy, it includes a secluded courtyard nestled beneath the canopy of a majestic Wild Seringa tree.

PRICE **R1490**



## RUE DE RUELLE (ROOM 12)

This room features a double bed, a basin, and a shower, complemented by convenient coffee and tea-making facilities. Please note that our Rue de Ruelle rooms are designed for standard accommodation, ideal for short stays.

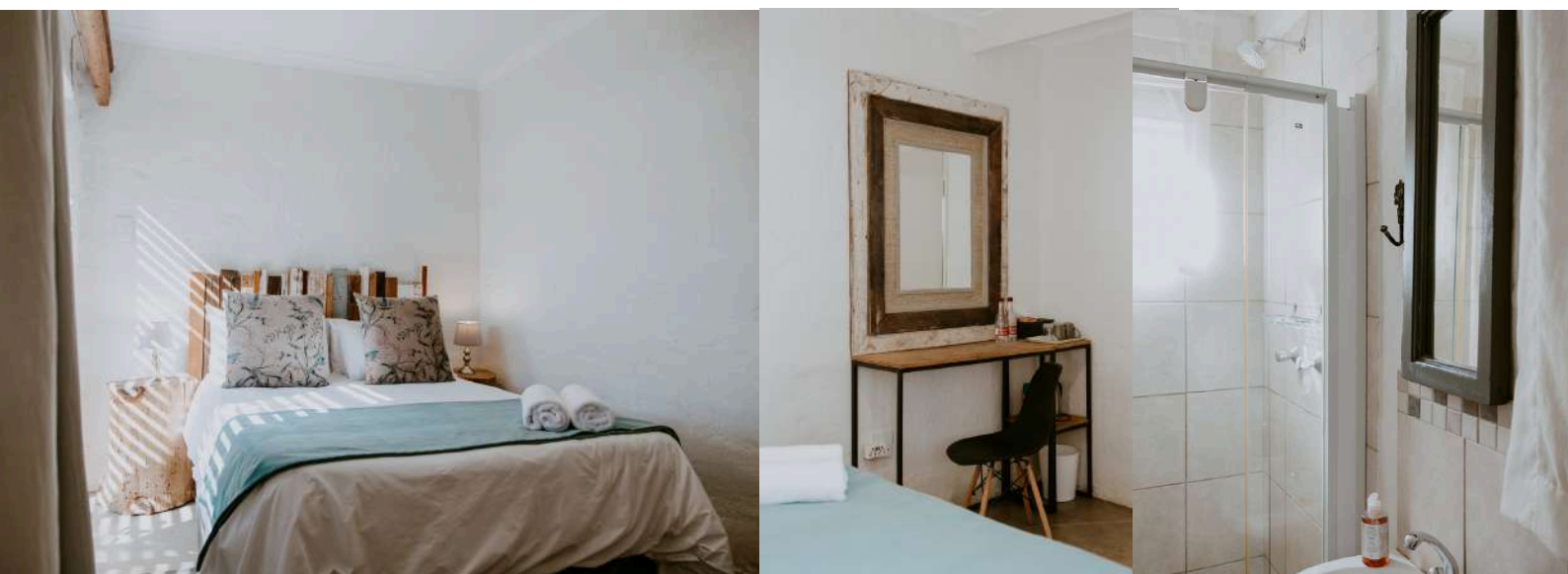
PRICE **R980**



## RUE DE RUELLE (ROOM 13)

This room features a double bed, a basin, and a shower, complemented by convenient coffee and tea-making facilities. Please note that our Rue de Ruelle rooms are designed for standard accommodation, ideal for short stays.

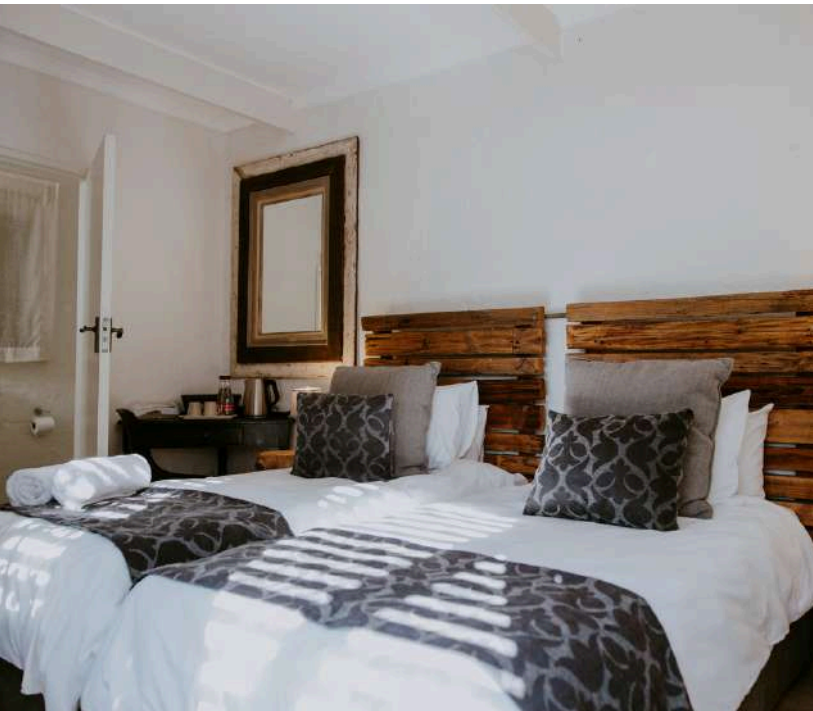
PRICE **R980**



## RUE DE RUELLE (ROOM 14)

Choose between twin beds or a luxurious king-size bed in this sunny, north-facing room. It also includes a comfortable reading chair, a basin, a shower, and convenient coffee and tea-making facilities.

PRICE **R980**



## RUE DE RUELLE (ROOM 15 & 16)

This room offers a double bed, a basin, and a shower, along with coffee and tea-making facilities. Enjoy the natural light from the sunny north-facing windows and access to a shared courtyard.

PRICE **R980**

